



CERTIFICATION OF HARD GREEN CONDITION OF BANANAS

REVISION REGISTER

Revision No.	Date of Issue	Amendment Details
First	21/04/1998	
Second	23/07/1998	
Third	25/08/1998	New Issue
Fourth	24/11/1999	Updated Issue
Fifth	27/01/2005	Pages 16, 17 & 18
Sixth	26/07/2005	All Pages
Seventh	23/03/2010	All Pages
Eighth	27/03/2014	Updated Issue

Controlled Copy No: _____

Controlled:

Authorised: _____

Uncontrolled:

Quality Control Officer

Uncontrolled copies of this document are not subject to amendment or revision. Holders of uncontrolled copies should contact the DPIF, Operations Manager, NTQ, GPO Box 3000, Darwin NT 0801, telephone: (08) 8999 2118 to obtain a current version of this document.

TABLE OF CONTENTS

1. PURPOSE	4
2. SCOPE	4
3. REFERENCES	4
4. DEFINITIONS	5
5. RESPONSIBILITY	6
6. REQUIREMENTS	7
7. PROCEDURE	8
7.1 Accreditation	8
7.1.1 Application for Accreditation	8
7.1.2 Audit Process	8
7.1.3 Certificate of Accreditation	9
7.1.4 Non-conformance and Sanctions	9
7.1.4.1 Non-conformance	9
7.1.4.2 Incident Reports	10
7.1.4.3 Suspension and Cancellation	10
7.1.4.4 Prosecution	10
7.1.4.5 Charging Policy	10
7.2 Maturity Testing Equipment	10
7.2.1 Calibration and Maintenance of Maturity Testing Equipment	11
7.2.2 Maturity Testing Equipment Calibration Records	11
7.3 Harvesting	11
7.3.1 Identification and Control of Nonconforming Bunches at Harvest	12
7.4 Bunch Reveal	12
7.4.1 Reveal of Bunches Grown by the Accredited Business	12
7.4.2 Reveal of Bunches Grown by Another Business	12
7.4.3 Identification and Control of Nonconforming Bunches at Reveal	13
7.5 Grading and Packing	13
7.5.1 Identification and Control of Nonconforming Hands, Clusters or Singles	13
7.6 Packed Product Inspection	14
7.6.1 Sample Selection	14
7.6.2 Examination of the Sample	14
7.6.3 Identification of Sample Packages	15
7.6.4 Action Following Identification of Nonconforming Packed Product	15
7.6.5 Rejected Product	16
7.6.6 Post Packing Security (Tasmania Only)	17
7.6.7 Packed Product Inspection Records	17
7.7 Dispatch	18
7.7.1 Package Identification	18
7.7.2 Assurance Certificates	18
7.7.3 Assurance Certificate Distribution	19
7.8 ICA System Records	19
7.9 ICA System Documentation	19

8. ATTACHMENTS	19
ATTACHMENT 1 - Application for Accreditation of a Business for an Interstate Certification Assurance (ICA) Arrangement (Blank)	21
ATTACHMENT 2 - Plant Health Assurance Certificate (PHAC) (Example)	23
ATTACHMENT 3 - Packed Product Inspection Record (Blank).....	24
ATTACHMENT 4 - Packed Product Inspection Record (Example).....	25
ATTACHMENT 5 - Identification of Packed Product Sample Packages (Example)	26
ATTACHMENT 6 - Growers Declaration for the Supply of Bananas for Certification for Hard Green Condition (Blank)	27
ATTACHMENT 7 - Measuring Banana Diameter (Example)	28
ATTACHMENT 8 - Typical Cavendish Type Bananas - (Example).....	29
ATTACHMENT 9 - Identification of Rejected Product - (Example)	31
ATTACHMENT 10 - Maturity Testing Equipment Calibration Record (Blank).....	32



1. PURPOSE

The purpose of this procedure is to describe -

- (a) the principles of operation and standards required; and
- (b) the responsibilities and practices of personnel;

that apply to the certification of hard green condition of bananas for fruit fly under an Interstate Certification Assurance (ICA) arrangement.

2. SCOPE

This procedure covers all certification of hard green condition of bananas by a business operating under an Interstate Certification Assurance arrangement in the Northern Territory.

Hard green condition is approved for **Cavendish type bananas only**.

Hard green condition of bananas may not be an accepted quarantine entry condition for all intrastate or interstate markets.

Some intrastate or interstate markets may require additional quarantine certification for pests and diseases other than fruit fly as a condition of entry.

It is the responsibility of the business consigning the produce to ensure compliance with all applicable quarantine requirements.

Information on intrastate and interstate quarantine requirements can be obtained from the Northern Territory Quarantine.

3. REFERENCES

WI-02 Guidelines for Completion of Plant Health Assurance Certificates.



4. DEFINITIONS

Accredit	means to authorise nominates staff within a business to issue Assurance Certificates.
Act	means the <i>Plant Health Act</i> .
Application for Accreditation	means an application for accreditation of a business for an Interstate Certification Assurance (ICA) and/or Certification Assurance (CA) arrangement (Attachment 1).
Assurance Certificate	means a Plant Health Assurance Certificate (Attachment 2).
Authorised Signatory	means a person whose name and specimen signature is included as an Authorised Signatory on the business's application for accreditation.
Banana	means fruit of <i>Musa spp.</i>
Business	means the legal entity responsible for the operation of the facility and ICA arrangement detailed in the business's Application for Accreditation.
Cavendish Type	means bananas belonging to the Cavendish subgroup of the AAA genome and includes but is not limited to the cultivars Williams, Mons Mari, Grande Naine, Dwarf Cavendish, WR1, JD Dwarf and JD Special.
Certification Assurance	means a voluntary arrangement between the Department of Primary Industry and Fisheries and a business that demonstrates effective in-house quality management and provides assurance through documented procedures and records that produce meets specified requirements.
Certified/Certification	means covered by a valid Plant Health Assurance Certificate (Attachment 2).
Distorted Banana	means includes doubles, malformed or abnormally shaped bananas.
Facility	means the location of the grading and packing operations covered by the Interstate Certification Assurance arrangement.
Hard Green Condition	means <ul style="list-style-type: none">(a) the flesh is hard and not flexible, the skin is green and shows no yellow coloration except for areas towards the flower end of a fruit in which the sun has bleached the skin to a yellow to white colour but the flesh beneath is still hard; and(b) no single banana, or banana on the outside whorl of a hand or cluster, (except a wing banana or distorted banana) has a diameter that exceeds 42 mm when measured at right angles to the curvature of the fruit at a point one third from its flower end.
Hard Green Condition	means <ul style="list-style-type: none">(a) hard green;(b) with unbroken skin; and(c) of the Cavendish type.



Healthy Plants of Adequate Vigour	means no obvious diseases that are upright.
ICA	means Interstate Certification Assurance.
Inspector	means an Inspector appointed under the <i>Plant Health Act</i> .
Interstate Certification Assurance	means a system of Certification Assurance developed to meet the requirements of State and Territory governments for the certification of produce for interstate and intrastate quarantine purposes.
Non-conformance	means a non-fulfilment of a specified requirement.
NTQ	means the Northern Territory Quarantine.
Queensland Fruit Fly	means all stages of the species <i>Bactrocera tryoni</i> or related species <i>B. aquilonis</i> .
Sun Bleaching	means areas towards the flower end of a fruit in which the sun has bleached the skin to a yellow to white colour but the flesh beneath is still hard.
Unbroken Skin	means the skin has no pre-harvest cracks, splits, punctures or other breaks that penetrate through to the flesh.
Wing Banana	means the first and second banana from either end of each row of a complete hand of bananas, which are typically three-cornered in cross section.

5. RESPONSIBILITY

These position titles have been used to reflect the responsibilities of staff under the ICA arrangement. These positions may not be present in all businesses, or different titles may be used for staff who carry out these responsibilities. In some businesses one person may carry out the responsibilities of more than one position.

The **Certification Controller** is responsible for -

- representing the business during audits and other matters relevant to ICA accreditation;
- ensuring the business has current accreditation for an ICA arrangement under this Operational Procedure;
- training staff in their duties and responsibilities under this Operational Procedure;
- ensuring the business and its staff comply with their responsibilities and duties under this Operational Procedure;
- ensuring all preparation of bananas for certification of hard green condition under the business's ICA arrangement is carried out in accordance with this Operational Procedure;
- ensuring bunch maturity testing equipment is calibrated and maintained (refer 7.2.1);
- maintaining records of maturity testing equipment calibration checks (refer 7.2.1);
- supervising the grading and packing process (refer 7.5);
- investigating and rectifying any problems following detection of a nonconformity in packed product by the Packed Product Controller (refer 7.6.4);
- determining corrective action following rejection of packed product (refer 7.6.5);



The **Harvest Supervisor** is responsible for -

- supervising the harvesting of bunches for certification of hard green condition (refer 7.3);
- ensuring all bunches harvested for certification of hard green condition are:
 - of the Cavendish type, and
 - are derived from healthy plants of adequate vigour.
- ensuring nonconforming bunches are identified prior to delivery to the packing shed (refer 7.3 and 7.3.1).

The **Graders/Packers** are responsible for -

- ensuring all bananas packed for hard green condition meet the hard green condition requirements (refer 7.5);
- ensuring non-conforming bananas are controlled and identified (refer 7.5.1).

The **Packed Product Controller** is responsible for -

- sampling and inspecting **at least one package per pallet for conformance** with the hard green condition requirements (refer 7.6 and 7.6.1);
- identifying all sampled packages (refer 7.6.3);
- advising the Certification Controller on detection of nonconforming bananas in sample packages (refer 7.6.4);
- withdrawing and isolating all packages on incomplete pallets being assembled following detection of a nonconformity (refer 7.6.4);
- maintaining Packed Product Inspection records (refer 7.6.7).

The **Authorised Dispatcher** is responsible for -

- ensuring all packages covered by an Assurance Certificate issued by the business under this Operational Procedure are identified (refer 7.7.1);
- maintaining copies of all Assurance Certificates issued by the business under the ICA arrangement (refer 7.8).

The **Authorised Signatory** is responsible for -

- ensuring, prior to signing and issuing an Assurance Certificate, that produce covered by the certificate has been prepared in accordance with the business' ICA arrangement and that the details on the certificate are true and correct in every particular (refer 7.7.2).

6. REQUIREMENTS

Bananas certified for hard green condition **must** be:

- (a) hard green;
- (b) with unbroken skin; and

(c) of the Cavendish type.

The Department of Primary Industry and Fisheries and interstate quarantine authorities maintain the right to inspect at any time certified produce and to refuse to accept a certificate where produce is found not to conform to specified requirements.

7. PROCEDURE

7.1 Accreditation

7.1.1 Application for Accreditation

A business seeking accreditation for an ICA/CA arrangement under this Operational Procedure **shall** submit an Application for Accreditation (refer Attachment 1) at least 10 working days prior to the intended date of commencement of certification of produce.

Applicants **must** provide the details of all produce, plants and plant products they intend to pack and certify under this ICA/CA arrangement in Section 4 of the Application for Accreditation. Ensure application form is completed correctly and all required attachments are provided. A copy of the application form **must** be maintained for audit purposes.

Each accredited business is provided with a unique Interstate Produce (IP) number to identify the business and its produce, plants and plant products for all interstate plant quarantine purposes as ministered by the Certificate of Accreditation.

7.1.2 Audit Process

Desk Audit

When the application is received a desk audit is conducted to ensure the application is completed correctly with the required attachments. If found to be incomplete the application form will be returned to the business for completion. Once the desk audit has been passed, an initial/compliance audit will be conducted.

Initial Audit

Prior to accrediting a business, an Inspector carries out an initial audit of the business to verify the ICA/CA system is implemented and capable of operating in accordance with the requirements of the Operational Procedure, and the system is effective in ensuring compliance with the specified requirements of the ICA/CA arrangement.

On completion of a successful initial audit, applicants will be granted provisional accreditation For a period of 4 weeks and a 'Certificate of Accreditation' for Provisional Certification will be issued (refer 7.1.3).

Initial Compliance Audit

In the first year of accreditation an initial compliance audit will be conducted within 4 weeks of accreditation or issuing an assurance certificate pursuant to the Operational Procedure. On completion of successful initial compliance audit the business **shall** be granted full accreditation.



On completion of a successful compliance audit, annual accreditation is granted to cover the current season, up to a maximum of twelve months from the date of provisional accreditation, and a new 'Certificate of Accreditation' issued (refer 7.1.3).

Compliance Audits

Compliance audits are conducted to verify that the ICA/CA system continues to operate in accordance with the requirements of the Operational Procedure.

Ongoing compliance audits are conducted at least once every six months for a business that operates for more than six months of each year.

Random audits are conducted on a selected number of accredited businesses each year. Random audits may take the form of a full compliance audit, or audits of limited scope to sample treatment mixtures, certified produce, ICA/CA system records or ICA/CA system processes.

Unscheduled compliance audits may be conducted at any time as a random audit or to investigate reported or suspected non-conformances.

Re-Accreditation

Accredited businesses are required to re-apply for accreditation each year the business seeks to operate under the ICA/CA arrangement. Businesses seeking re-accreditation **must** lodge a renewal application prior to accreditation lapsing, or if accreditation has lapsed, prior to being accredited to certify produce under the ICA/CA arrangement.

A compliance audit is conducted within twelve weeks of the business applying for re-accreditation each year.

7.1.3 Certificate of Accreditation

An accredited business will receive a 'Certificate of Accreditation for an Interstate Certification Assurance' detailing the facility location, Operational Procedure, scope (type of produce and chemical covered) and period of accreditation.

The business **must** maintain a current 'Certificate of Accreditation for an Interstate Certification Assurance' and make this available on request by an Inspector.

A business may not commence or continue certification of produce under the ICA/CA arrangement unless it is in possession of a valid and current 'Certificate of Accreditation for an Interstate Certification Assurance' for the facility, procedure, produce type and chemical covered by the Assurance Certificate.

7.1.4 Non-conformances and Sanctions

7.1.4.1 Non-conformances

Audits are regularly undertaken to evaluate the effectiveness of implementation of the requirements. If, in the opinion of the auditor, there is evidence indicating that there has been a failure to meet one or more accreditation requirements, the auditor may raise a Non-



conformance Report (NCR). Actions required to address the non-conformance **shall** be discussed and recorded on the NCR.

If integrity of the accreditation has been significantly compromised, the non-conformance may provide grounds for the suspension or cancellation of the accreditation, and prosecution.

7.1.4.2 Incident Reports

Incident Reports may be raised by intra and/or interstate quarantine authorities to report the detection of a non-conformance in produce certified under this arrangement. An investigation into the incident **shall** be conducted and findings reported back to the originator.

If the integrity of the accreditation has been significantly compromised, the incident may provide grounds for the suspension or cancellation of the accreditation, and prosecution.

7.1.4.3 Suspension and Cancellation

The NTQ may suspend or cancel an accreditation when a business is found, to have:

- obtained accreditation through the provision of false or misleading information;
- contravened an accreditation requirement that compromises the integrity of the arrangement;
- not rectified a non-conformance;
- not paid fees owing to the NTQ.

Any action taken by the NTQ to suspend or cancel an accreditation **shall** be provided in writing to the business. This **shall** provide guidance making an appeal to have the decision be reviewed.

7.1.4.4 Prosecution

Businesses found to be operating contrary to the Act may be liable for prosecution.

7.1.4.5 Charging Policy

Plant Biosecurity fees will apply to businesses that participate in ICA/CA arrangements. NTQ can be contacted for a schedule of the Plant Biosecurity fees.

7.2 Maturity Testing Equipment

Measurement of bananas for maturity testing for hard green condition **shall** be carried out using slide callipers graduated to 1.0mm or smaller increments, or using a measuring template.

Measuring templates **must** be made of a solid material which is not easily bent or damaged.

Measuring templates **shall** be marked in a manner that the measurement size is easily identifiable.



Slide callipers or measuring templates used for maturity testing of bananas under the ICA arrangement **shall** be marked in a manner which clearly identifies each individual measuring device.

7.2.1 Calibration and Maintenance of Maturity Testing Equipment

Callipers or measuring templates used for maturity testing **shall** be checked for calibration by using a **control calibration block**, or a **control standard steel rule** or **control calliper** graduated to 1.0mm or smaller increments at a minimum of once per week during the period bunches are being received for certification of hard green condition.

Callipers or measuring templates **shall** be accurate to $\pm 0.5\text{mm}$ when measured against the **control calibration block**, **control standard steel rule** or **control calliper**.

Callipers or measuring templates **shall** be clean and free from damage or wear which may affect accuracy of maturity test measurements. Test equipment which is dropped or damaged during use **shall** be re-calibrated prior to further use.

The business's **control calibration block**, **control standard steel rule** or **control calliper** **shall** be maintained under secure conditions and used solely for the purpose of calibration checks of maturity testing equipment.

7.2.2 Maturity Testing Equipment Calibration Records

The Certification Controller **shall** maintain results of calibration checks on maturity testing equipment (refer Attachment 10). Maturity testing equipment calibration records **shall** record the following information -

- the date of calibration;
- the identification of the measuring device calibrated;
- confirmation the equipment is accurate to within $\pm 0.5\text{mm}$;
- the officer responsible for conducting the calibration check.

7.3 Harvesting

The business **shall** implement harvesting systems designed to ensure that all bunches harvested for certification of hard green condition are -

- (a) of the Cavendish type;
- (b) derived from healthy plants of adequate vigour.

The Harvesting Supervisor **shall** supervise harvesting of bunches to ensure bunches which do not conform to these specified requirements are clearly identified prior to delivery to the packing shed.

It is advisable that the business implement systems to measure bunch maturity at harvest or at receipt (refer 7.4) to assist in ensuring that all bunches received for certification under this Operational Procedure are in hard green condition.



7.3.1 Identification and Control of Non-conforming Bunches at Harvest

All harvested bunches found to be non-conforming at harvest (ie. do not meet the requirements listed in 7.3) **shall** be identified by the Harvest Crew to prevent mixing with conforming bunches.

Examples of acceptable methods of identifying non-conforming bunches include -

- (a) painting the stem of the bunch, or securely attaching a ring of coloured ribbon or tape to the stem of the bunch;
- (b) securely attaching a tag or label to the bunch which clearly identifies the bunch as non-conforming;
- (c) where an entire load of bananas is non-conforming, securely attaching a tag, label or other marker to the load which clearly identifies the load as non-conforming.

Other methods may be used provided they clearly identify non-conforming bunches from conforming bunches at receipt (refer 7.4).

7.4 Bunch Receipt

7.4.1 Receipt of Bunches Grown by the Accredited Business

The Bunch Receipt Officer **shall** identify and isolate non-conforming bunches (ie. do not meet the requirements listed in 7.3) to prevent mixing with conforming bunches (refer 7.4.3).

7.4.2 Receipt of Bunches Grown by Another Business

The business **shall** advise growers supplying bunches for grading and packing for hard green condition of the requirements for harvesting bunches detailed in 7.3.

The business **shall** maintain a 'Grower Declaration for the Supply of Bananas for Certification for Hard Green Condition' (refer Attachment 6) for any business other than the ICA accredited business, supplying bunches for certification of hard green condition under the ICA arrangement.

The Bunch Receipt Officer **shall** ensure that any bunches received, which have been grown by another business, come from a business which has a current 'Grower Declaration for the Supply for Certification for Hard Green Condition'.

Grower Declarations supplied to an ICA accredited business remain current as long as the details supplied by the grower in the declaration are accurate and continue to be complied with.

The Bunch Receipt Officer **shall** identify and isolate non-conforming bunches to prevent mixing with conforming bunches (refer 7.4.3).



7.4.3 Identification and Control of Non-conforming Bunches at Reveal

All bunches received for grading and packing for hard green condition which are found to be non-conforming (ie. do not meet the requirements listed in 7.3) **shall** be identified to prevent mixing with conforming bunches.

Examples of acceptable methods of identifying non-conforming bunches **shall** include -

- (a) painting the stem of the bunch, or securely attaching a ring of coloured ribbon or tape to the stem of the bunch;
- (b) securely attaching a tag or label to the bunch which clearly identifies the bunch as non-conforming;
- (c) locating non-conforming bunches in a separate area to conforming bunches and maintaining separation until the bunches are graded and packed;
- (d) de-handing the bunch and maintaining hands from non-conforming bunches separate and identifiable from hands originating from conforming bunches.

Other methods may be used provided they clearly identify non-conforming hands/bunches from conforming hands/bunches at grading and packing (refer 7.5).

7.5 Grading and Packing

All bananas from conforming bunches **shall** be inspected and sorted for hard green condition and broken skins.

Grading staff **shall** reject for certification under this Operational Procedure the following -

- (a) any single banana, or any hand or cluster which contains a banana whose flesh is not hard or is flexible, or which is not green or shows any yellow coloration other than sun bleaching;
- (b) any single banana, or any banana on the outside whorl of a hand or cluster (except a wing banana or distorted banana) which exceeds 42mm in diameter when measured at right angles from the curvature of the fruit at a point one third from the flower end;
- (c) any banana with pre-harvest cracks, splits, punctures or other breaks of the skin which penetrate through to the flesh.

The Certification Controller **shall** oversee and supervise the grading and packing process to ensure only conforming bananas are packed for certification under this Operational Procedure.

7.5.1 Identification and Control of Non-conforming Hands, Clusters or Singles

The business **shall** implement procedures for the control and identification of non-conforming hands, clusters or singles.

Procedures **shall** ensure that no mixing of conforming and non-conforming bananas can occur during grading and packing.



7.6 Packed Product Inspection

The Packed Product Controller **shall** continually monitor the sorting and packing process by selecting a minimum of one package from each pallet or packed product.

The Packed Product Controller **shall** advise the Certification Controller of any problems or potential problems detected in a sample packages so corrective action can be implemented.

7.6.1 Sample Selection

Sample packages **shall** be selected at random from each pallet during assembly of the pallet at least one package per pallet.

Part pallets **shall** be regarded as full pallets for the purpose of this Operational Procedure.

7.6.2 Examination of the Sample

The Packed Product Controller **shall** carry out 100% inspection of the fruit in each sample package for compliance with the hard green condition requirements.

Verification of Hard Green

The Packed Product Controller **shall** ensure that the sample package contains -

- (a) no single banana, or any hand or cluster which contains a banana whose flesh is not hard or is flexible, or which is not green or shows any yellow coloration other than sun bleaching;
- (b) no single banana, or banana on the outside whorl (row) of any hand or cluster (except a wing banana or distorted banana) that exceed a maximum diameter of 42mm when measured at right angles to the curvature of the fruit one third of the length from the flower end.

A wing banana is the first and second banana from either end of each row of a complete hand of bananas. Wing bananas tend to be triangular in cross-section with pronounced ridges.

A distorted banana includes doubles, malformed or abnormally shaped bananas.

Examples of wing and distorted bananas are shown in Attachment 8.

For clusters and singles, wing bananas may be identified by the presence of a complete cushion on one side of the cluster or single. Clusters or single bananas with a broken or cut edge on both sides of the cushion **shall** not be regarded as wing bananas.

Measurements **shall** be taken using a calibrated slide calliper or measuring template (refer 7.2) as demonstrated in Attachment 7.

Verification of Freedom From Broken Skin

The Packed Product Controller **shall** examine all bananas in sample packages to ensure bananas are of the Cavendish type.



Broken skin includes pre-harvest cracks, splits, punctures or other breaks of the skin that penetrate through to the flesh.

Verification of Cavendish Type

Cavendish type includes but is not limited to the cultivars Williams, Mons Mari, Grande Naine, Dwarf Cavendish, WR 1, JD Dwarf and JD Special.

Examples of typical Cavendish type bananas are shown in Attachment 8.

Should the Packed Product Controller suspect that the cultivar is not of the Cavendish type, the Packed Product Controller **shall** in the first instance advise the Certification Controller.

The Certification Controller **shall** confirm with the grower or Harvest Supervisor that the bananas received are of the Cavendish type. Where necessary, the Certification Controller **shall** have samples examined by an officer of the Department of Primary Industry and Fisheries for confirmation of the banana type before passing the inspection lot.

7.6.3 Identification of Sample Packages

Sample packages **shall** be sequentially numbered during the day of packing.

The Packed Product Controller **shall** identify each sample package by placing a stamp or sticker with the lettering PPS No. (Packed Product Sample No.) on the exposed end of the package and mark on or below the identifier the sequential sample number and their initials prior to returning it to the pallet.

The sample packages examined by the Packed Product Controller **shall** be stacked on the pallet with the PPS No. visible on the outside of each pallet packed for certification of hard green condition.

An example of a PPS No. stamp or sticker is shown as Attachment 5.

7.6.4 Action Following Identification of Non-conforming Packed Product

If any single fruit in a sample package is found to be past the hard green stage, has broken skin or is not of the Cavendish type, the packed Product Controller **shall** -

- (a) reject the sample package;
- (b) withdraw and isolate all packed product on incomplete pallets at the time of the inspection;
and
- (c) stop the packing line.

Withdrawn packed product may be limited to only those packages packed on the day the non-conformance was detected.

The Certification Controller **shall** be advised if any sample package is rejected. The Certification Controller **shall** advise the grading staff of the non-conformance and conduct an investigation to identify the cause.



Once any problems have been identified and rectified, grading and packing **may recommence on to new pallets.**

The Packed Product Controller **shall** note in the “Comments” section of the Packed Product Inspection Record next to the entry for the sample package which failed inspection, the reason for failure and the number of withdrawn packages.

Following resumption of grading and packing, the Packed Product Controller **shall** select another three sample packages at random from the withdrawn pallets. The Packed Product Controller **shall** carry out 100% inspection of these three sample packages for conformance with the requirements listed in 6. Requirement.

Sample packages **shall** be given the next three Packed Product Sample (PPS) numbers after the sample package which initially failed inspection and **shall** be identified as for 7.6.6. The inspection results **shall** be entered on the Packed Product Inspection Record.

If all three sample packages are found to conform, the withdrawn pallets and the three sample packages may be passed for certification and returned to the pallet assembly point.

If any of the three sample packages contain a non-conforming banana, all packages on the withdrawn pallets and the three sample packages **shall** be rejected.

7.6.5 Rejected Product

Rejected packages **shall** be isolated and clearly identified to prevent mixing with conforming packages.

Rejected packages **shall** be handled as follows -

- (a) where sample packages contain single bananas or bananas on the outside whorl of a hand or cluster (except wing bananas or distorted bananas) which are **not hard green** rejected packages **must** -
be treated with an approved post-harvest treatment;
OR
be regraded and repacked;
- (b) where sample packages contain bananas **with broken skins** the rejected packages **must** be treated with an approved post-harvest treatment.
OR
be regraded and repacked;
- (c) where sample packages contain bananas which are not **of the Cavendish type**, rejected packages **must** –
be treated with an approved post-harvest treatment.

Rejected packages which have been regraded and repacked **must** be re-inspected in accordance with this section prior to certification under this Operational Procedure.



Alternatively, rejected packages may be consigned to markets that do not require certification of hard green condition.

7.6.6 Post Packing Security (Tasmania Only)

Fruit packed for certification under this Operational Procedure **shall** be held for the minimum practicable period after packing before it **must** be secured against fruit fly infestation.

Certified fruit **must** be stored at and transported from the facility under secure conditions which prevent infestation by fruit fly.

Certification Assurance certificates **must** state that fruit was; "Packed in such a way as to prevent re-infestation of insects."

Secure conditions include –

- (a) unvented packages;
- (b) vented packages with the vents secured with gauze/mesh with a maximum aperture of 1.6mm;
- (c) fully enclosed under tarpaulins, hessian, shade cloth, mesh or other covering which provides a maximum aperture of 1.6mm;
- (d) shrink-wrapped and sealed as a palletised unit;
- (e) fully enclosed or screened buildings, coldrooms, vehicles or other facilities free from gaps or other entry points greater than 1.6mm.

Fruit consigned to Tasmania must be transported in full container lots sealed prior to transport, or as lesser container lots in accordance with the requirements of (a), (b) or (d) above.

Where consignments are transported to Tasmania as full container lots, the seal number must be included in the Brand Name or Identifying Marks section of the Assurance Certificate covering the consignment (refer Attachment 2).

Where consignments are transported in vented packages that are sealed as a palletised unit in accordance with (d) above, the business must secure the top layer of the pallet by applying a row of tape over the shrinkwrap and have applied to the tape in waterproof ink the signature of an Authorised Signatory, the number of the Plant Health Assurance Certificate covering the consignment and the date.

The business **shall** have adequate procedures in place which prevent mixing of treated and untreated fruit at the facility.

7.6.7 Packed Product Inspection Records

The Packed Product Controller **shall** maintain records of the results of packed product inspection.



Packed product inspection records **shall** be in the form of a Packed Product Inspection Record (refer Attachment 3) or records which captures the same information.

Packed product inspection records **must** include -

- the Interstate Produce (IP) Number of the business that operates the approved facility in which the bananas were packed;
- the date of inspection of the sample package;
- the sample package sequential number (PPS No.);
- the inspection results of the sample package;
- details of defects or problems detected during inspection;
- the number of any withdrawn or rejected packages;
- the name and signature of Packed Product Controller.

An example of a completed Packed Product Inspection Record is shown as Attachment 4.

7.7 Dispatch

7.7.1 Package Identification

The Authorised Dispatcher **shall** ensure that, after grading and packing, each package is marked in indelible and legible characters of at least 5 mm, on the end of every package with -

- the Interstate Produce (IP) number of the accredited business that packed the bananas;
- the words "MEETS ICA-06"; and
- the date or date code on which the produce was packed;

prior to the issuance of an Assurance Certificate by the business under this Operational Procedure.

Any packages containing fruit that has not been treated in accordance with the requirements of this Operational Procedure shall not be marked as stated above.

7.7.2 Assurance Certificates

The Authorised Dispatcher **shall** ensure an Assurance Certificate is completed and signed by an Authorised Signatory of the business prior to consignment of produce to a market requiring certification of hard green condition.

Assurance Certificates **shall** be in the form of a Plant Health Assurance Certificate (PHAC). A completed example is shown as Attachment 2.

Individual Assurance Certificate **shall** be issued to cover each consignment (ie. a specified quantity of product transported to a single consignee at one time) to avoid splitting of consignments.



Assurance Certificates **shall** be completed, issued and distributed in accordance with the work Instruction Guidelines for Completion of Plant Health Assurance Certificates (WI-02).

7.7.3 Assurance Certificate Distribution

The **original** (white copy) **must** accompany the consignment.
The **duplicate** (yellow copy) **must** be retained by the business.
The **Triplicate** (green copy) **must** be sent to NTQ.

7.8 ICA System Records

The business **shall** maintain the following records -

- (a) maturity testing equipment calibration test records (refer 7.2.2);
- (b) if applicable, a current Grower Declaration for the Supply of Bananas for Certification for Hard Green Condition from any other business supplying bananas for certification of hard green condition under the ICA arrangement (refer 7.4.2);
- (c) Packed Product Inspection Record (refer 7.6.6);
- (d) a copy of each Plant Health Assurance Certificate (Attachment 2) issued by the business (refer 7.7.3).

ICA system records **shall** be retained for a period of not less than 24 months from completion.

ICA system records **shall** be made available on request by an Inspector.

7.9 ICA System Documentation

The business **shall** maintain the following documentation -

- (a) a copy of the business’s current Application for Accreditation (refer Attachment 1);
- (b) a current copy of this Operational Procedure;
- (c) a current Certificate of Accreditation for an Interstate Certification Assurance.

ICA system documentation **shall** be made available on request by an Inspector.

8. ATTACHMENTS

Attachment 1	Application for Accreditation of a Business for an Interstate Certification Assurance (ICA) and/or Certification Assurance (CA) Arrangement	(BLANK)
Attachment 2	Plant Health Assurance Certificate (PHAC)	(COMPLETED EXAMPLE)
Attachment 3	Packed Product Inspection Record	(BLANK)
Attachment 4	Packed Product Inspection Record	(COMPLETED EXAMPLE)
Attachment 5	Identification of Packed Product Sample Packages	(EXAMPLE)



Attachment 6	Grower Declaration for the Supply of Bananas for Certification for Hard Green Condition	(BLANK)
Attachment 7	Measuring Banana Diameter	(EXAMPLE)
Attachment 8	Examples of Typical Cavendish Type Bananas	(EXAMPLE)
Attachment 9	Example of Identification of Rejected Product	(EXAMPLE)
Attachment 10	Maturity Testing Equipment Calibration Test Record	(BLANK)



Tick each box that describes your business and the ICA/CA arrangement and provide specific details where required. Only one arrangement, that is one Operational Procedure at one Facility, may be covered in one application.

Indicate the type of application being made. New Renewal Amendment

1. Business/Person Details

(a) Type of Ownership of Business

Individual Incorporated Company Other (please specify) Partnership Cooperative Association

(b) Name of Business/Person

Name of Business/Person input fields

Please supply name in full. For a partnership, list the full names of each partner in their normal order. Companies must provide their Australian Company Number (ACN) or Australian Registered Body Number (ARBN) and attach a copy of the Certificate of Incorporation. Cooperative associations must provide appropriate proof of registration (i.e. a copy of the Certificate of Registration or registration search from the Office of Business Affairs or Australian Securities Commission)

ARBN ACN input boxes

(c) Trading Name/s of the Business/Person (as shown on packages sent to market)

Trading Name/s input field

(d) Postal address of the Business/Person

Postal address input fields

Telephone Facsimile Mobile input fields

E-mail input field

(e) Has the business/person been registered previously for the interstate movement of produce? Yes No If yes, give the business's/persons Interstate Produce (IP) Number

IP Number input field with 'A' label

2. Operational Procedure and Facility Details

a) Operational Procedure used in this arrangement

Reference No. Title of Operational Procedure input fields

(b) Street address of the facility

Street address input fields

Telephone Facsimile Mobile input fields

3. Authorised Signatories (for Plant Health Assurance Certificates)

Table with columns: Family Name, Given Name/s, Specimen Signature. Rows: Certification Controller, Back-up Certification Controller, Additional Authorised Signatories

4. Types of Produce to be Prepared Under the ICA/CA Arrangement (if insufficient space, attach a list)

5. Interstate Certification Assurance/Certification Assurance System Records

(a) What records do you maintain to verify that the business is carrying out its responsibilities and duties under the Operational Procedure?

- We maintain all our records in accordance with the examples provided in the Operational Procedure.
 We have developed alternative or additional records to those provided in the Operational Procedure.

(b) List the alternative or additional records you intend to use and attach a copy to this application.

(a) (b) (c)	
-------------------	--

6. Accreditation Conditions

(a) For the purposes of this agreement the following definitions shall apply:-

- Applicant* means the person, **corporation**, or other legal entity who is accredited under this agreement.
Inspector means an inspector appointed under the *Plant Health Act*
Department means the Department of Primary Industry and Fisheries
Interstate Certification Assurance System means the processes, equipment, personnel and resources used to implement the Operational Procedure nominated in Section 2(a).

- (b) The applicant must maintain and operate the interstate certification assurance system in accordance with the Operational Procedure as nominated in Section 2(a), and must maintain the records specified in Section 5.
(c) The applicant will, upon request, allow an inspector to enter any premises where produce certified under the agreement is treated or dispatched, or where any produce, equipment, chemicals, documents for records are stored.
(d) The inspector may inspect or take samples of any relevant item present on the premises at the time of the inspection.
(e) The applicant must take all steps to assist an inspector in the conduct of audits including allowing the inspector or officer to interview any employee of the applicant in relation to the Implementation of the Interstate Certification Assurance System.
(f) The applicant authorises the persons listed in Section 3 of this application to issue certificates on his or her behalf.
(g) In the event of cancellation or non-renewal of this arrangement the certificate pad and any green copies must be returned as they remain the property of Northern Territory Quarantine.
(h) Plant Biosecurity fees will apply to those businesses/persons that choose to participate in this ICA/CA arrangement. Northern Territory Quarantine can be contacted for a schedule of the Plant Biosecurity fees.

The applicant agrees to abide by the accreditation conditions listed above and acknowledges that any accreditation is granted subject to those conditions.

The applicant certifies that all of the information contained in this application is true and correct.

Signature/s	Date

Note: Where the applicant is a corporation, the company seal must be applied, and signed, in the appropriate form. Where the applicants are members of a partnership, each of the partners must sign the application.

Office Use Only

Desk Audit	<input type="checkbox"/> Passed	<input type="checkbox"/> Failed	
Name (print) _____	Date received ____ / ____ / ____		
Signature: _____	Date completed ____ / ____ / ____		

Post your application/s to: Department of Primary Industry and Fisheries, NT Quarantine
GPO Box 3000, DARWIN NT 0801

Plant Health Assurance Certificate

Consignment Details (PLEASE PRINT)

CONSIGNOR (FROM)
Name <i>Joe's Banana Farm Pty Ltd</i>
Address <i>Lot 2000 Beddington Road</i> <i>Humpty Doo NT 0836</i>

CONSIGNEE (TO)
Name <i>Adelaide Produce Market</i>
Address <i>Burma Road</i> <i>Pooraka South Australia 5095</i>

RECONSIGNED TO (Splitting consignments or reassigning whole consignments).
Name
Address

BRAND NAME OR IDENTIFYING MARKS (as marked on packages)
<i>Joe's Banana Farm</i>

DATE OR DATE CODE (as marked on packages)
<i>18032014</i>

Number of Packages	Type of Packages (e.g. trays, cartons)	Type of Produce	Authorisation for Split Consignment
<i>40</i>	<i>Cartons</i>	<i>Bananas</i>	_____
_____	_____	_____	_____
_____	_____	_____	_____
_____	_____	_____	_____

Treatment Details

Treatment	Chemical (Active Ingredient)	Treatment Date	Concentration / Duration and Temperature
_____	_____	_____	_____
_____	_____	_____	_____
_____	_____	_____	_____
_____	_____	_____	_____

Additional Certification / Codes
<i>Bananas in a hard green condition with unbroken skin</i>
<i>Meets ICA06.</i>

Declaration

I, an authorised Signatory of the accredited business that prepared the plants or plant produce described above, hereby declare that the plants or plant produce have been prepared in the business's approved facilities in accordance with the *Plant Health Act* and that the details shown above are true and correct in every particular.

AUTHORISED SIGNATORY'S NAME (PLEASE PRINT)	SIGNATURE	DATE
<i>Joe Signatory</i>	<i>Joe Signatory</i>	<i>18/3/2014</i>

PACKED PRODUCT INSPECTION RECORD

Attachment 3

IP NUMBER		DATE: / /				PAGE OF PAGES	
PPS No	HARD GREEN	UNBROKEN SKINS		CAVENDISH TYPE		(Note any defects or problems detected during inspection and number of any withdrawn or rejected packages)	
	YES	NO	YES	NO	YES	NO	
1							
2							
3							
4							
5							
6							
7							
8							
9							
10							
11							
12							
13							
14							
15							
16							
17							
18							
19							
20							
21							
22							
23							
24							
25							
26							
27							
28							
29							
30							
31							
32							
33							
34							
35							
36							
37							
38							
39							
40							

Packed Product Controller:

Printed Name

Signature

____ / ____ / ____

Date

PACKED PRODUCT INSPECTION RECORD

Attachment 4

IP NUMBER T1001		DATE: 21/11/999				PAGE 1 OF 2 PAGES	
PPS No	HARD GREEN		UNBROKEN SKINS		CAVENDISH TYPE		(Note any defects or problems detected during inspection and number of any withdrawn or rejected packages)
	YES	NO	YES	NO	YES	NO	
1	✓		✓		✓		
2	✓		✓		✓		
3		✓	✓		✓		FRUIT SHOWS YELLOW OF MATURITY
4	✓			✓	✓		SOME PRE HARVEST SPLITTING
5	✓		✓		✓		
6	✓		✓		✓		
7	✓		✓		✓		
8	✓		✓		✓	✓	REJECTED PALLET
9							
10							
11							
12							
13							
14							
15							
16							
17							
18							
19							
20							
21							
22							
23							
24							
25							
26							
27							
28							
29							
30							
31							
32							
33							
34							
35							
36							
37							
38							
39							
40							

Packed Product Controller:

Printed Name HG BANANA

Signature _____

21/11/1999
Date

Marking Sample Packages After Packed Product Inspection

Following inspection, the Packed Product Controller must-

- (a) mark one end of each sample package by applying a stamp or sticker with the PPS No. (Packed Product Sample No.) and their initials as shown below;
- (b) ensure that the PPS No. stamp or sticker is visible on the exposed end of the package when the package is assembled on the pallet.

Stamp or Sticker Design (Example Only)



Completed Stamp or Sticker (Example Only)



**GROWER DECLARATION FOR THE SUPPLY OF BANANAS
FOR HARD GREEN CONDITION**

Attachment 6

I _____ (full printed name)

of _____ (address)

hereby declare to -

_____ (name of business)

at _____ (facility address)

Interstate Produce Number **A** _____, that any bunches of bananas supplied by me for grading and packing for certification of hard green condition will only-

- (a) be of the Cavendish variety; and
- (b) be derived from healthy plants of adequate vigour.

Any bunches supplied by me to the above business which do not meet these requirements will be clearly identified in the following manner-

painting the stem of each bunch _____ (insert colour)

securely attaching a ring of _____ (insert colour), coloured ribbon or tape to the stem of each bunch

securely attaching a tag or label to each bunch containing the words-

when an entire load of bunches is delivered, securely attaching to the load-

a tag containing the words-

a label containing the words-

other (specify)

Signature

Date / /

MEASURING BANANA DIAMETER

Attachment 7

Measuring Hand, Cluster or Single Banana Maturity



No single banana or banana on the outside whorl (except a wing banana or distorted banana) may have a diameter that exceeds 42mm when measured at right angles to the curvature of the fruit at a point one third of the length from its flower end.



The flesh of the banana must be hard and not flexible and the skin must be green and show no yellow colouration.

EXAMPLE OF TYPICAL CAVENDISH TYPE BANANAS

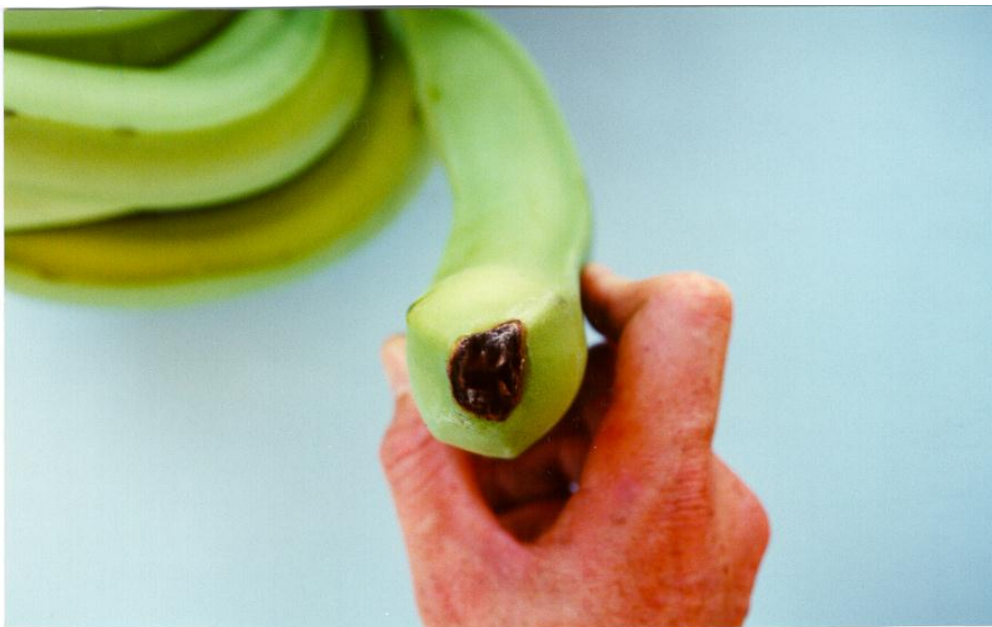
Attachment 8

Typical Bunch of Cavendish Banana



EXAMPLES OF TYPICAL CAVENDISH TYPE BANANAS**Typical Hand of Cavendish Bananas****Cross Section of Wing Banana**

Wing bananas are the first and second banana from either end of each whorl (row) of a complete hand of bananas, and are typically three-cornered in cross section.



Wing bananas may be identified by the presence of a complete cushion on one side of a single or cluster. Bananas with a broken or cut edge on both sides of the cushion are not regarded as wing bananas.

IDENTIFICATION OF REJECTED PRODUCE**Marking Rejected packages**

Following rejection, inspectors must mark each visible package on each rejected pallet in the inspection lot to clearly identify rejected product.



MATURITY TESTING EQUIPMENT CALIBRATION RECORD

Attachment 10

IP NUMBER	DATE:	/	/	PAGE	OF	PAGES
Date of Calibration	Identification of the Measuring Device Calibrated	Equipment is accurate to within $\pm 0.5\text{mm}$		Officer Responsible for Conducting the Calibration Check (Name and Signature)		

Certification Controller:

_____ Printed Name

_____ Signature

/ / Date